

# ESDA 804-00



## Acrylic Cabinet



Our ESDA Series is suitable for storage under controlled atmosphere. This can be achieved through a nitrogen unit and / or installation of our state-of-the-art U-4001 drying unit. The cabinet is delivered without a control panel.

Proven in use around the world, the unique design of the ESDA 804 with optional drying unit U-4001 is highly energy efficient, representing a significant cost advantage for our customers

The ESDA version is produced ESD safe. The surfaces of the cabinet are not chargeable. Acrylic body  $10^{-7} \Omega/\text{sq}$ .



### 0 series display

Battery operated humidity measurement device (standard in cabinet)



## ESDA 804-00

### Standard Features

✓ <b>Hygrometer</b>	Hygrometer with alarm function, accuracy +/- 3%
✓ <b>ESD safe design</b>	Norm (IEC 61340-5-1) Acrylic body (<math>10^{-7}</math> Ohm/sq) Dissipative glazing (in- and outside $10^8$ Ohm/sq)
✓ <b>Lockable door</b>	2 doors locked with key
✓ <b>Shelves</b>	In height adjustable chromium plated steel shelves (5 pcs)
✓ <b>Drying unit option</b>	Pre mounted hole for installing drying unit and N <sup>2</sup> flow system
✓ <b>Transport</b>	Castors, 360° rotating wheels
✓ <b>Power supply</b>	Power cord 5 meter with IEC plug (when drying unit is mounted)

### Benefits

✓ <b>Recovery time after door opening</b>	<15 minutes to below 1% (when drying unit is mounted)
✓ <b>Highly energy efficient</b>	Average power consumption 24 W/h (when drying unit is mounted)
✓ <b>Options availability</b>	Dry unit U-4001 / N <sub>2</sub> (auto) Flow / SMD Reel racks, etc.
✓ <b>Clear Polycarbonate material</b>	Easy to look through

## Technical data cabinet with drying unit U-4001

- ✓ External dimensions: (W x H x D) 1152 x 1485(1690) x 517 mm
- ✓ Internal dimensions: (W x H x D) 1135 x 1480 x 480 mm
- ✓ Weight: 87 kg
- ✓ Weight on shelf: 30 kg
- ✓ Max. loading capacity: 200 kg
- ✓ Frame: Aluminium, coated
- ✓ Body: ESD-Polycarbonate 10<sup>7</sup> Ω/sq
- ✓ Shelves (WxD): 9 pcs long, 460 x 490 mm adjustable  
1 pcs short, 460 x 380 mm adjustable
- ✓ Volume: 790 L (due to volume of drying unit)
- ✓ Electric supply: 230 VAC (120 VAC optional)
- ✓ Power consumption: Average 35 W/h
- ✓ Protection class: Class 1, hard grounded
- ✓ Humidity level cabinet: ≤2% RH depending on amount of door openings

## Technical data cabinet without drying unit

- ✓ External dimensions: (W x H x D) 574 x 1485(1690) x 517 mm
- ✓ Internal dimensions: (W x H x D) 560 x 1480 x 480 mm
- ✓ Weight: 80 kg
- ✓ Weight on shelf: 30 kg
- ✓ Max. loading capacity: 100 kg
- ✓ Frame: Aluminium, coated
- ✓ Body: ESD-Polycarbonate 10<sup>7</sup> Ω/sq
- ✓ Shelves (WxD): 10 pcs long, 460 x 490 mm adjustable
- ✓ Volume: 800 L

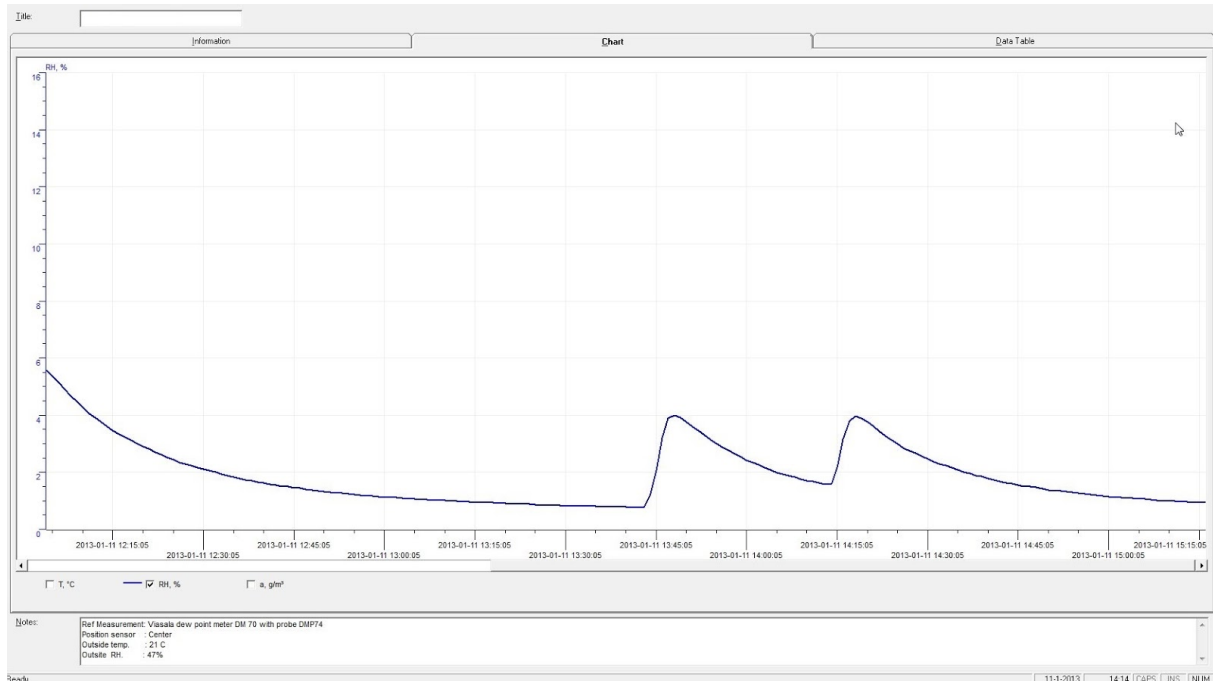
## Technical data dry-unit U-4000 series

- ✓ Control: Standalone drying unit (no control function)
- ✓ Dehumidifying Temperature: 10 – 40° C
- ✓ Electric supply: 230VAC 50Hz (120VAC 60Hz optional)
- ✓ Dimensions (L x B x H): 260 x 380 x 100 mm
- ✓ Weight: 8,1 kg
- ✓ Power consumption: 24 W/h

## Technical data N<sup>2</sup> Flow

- ✓ N<sup>2</sup> connection: 8mm hose connection
- ✓ N<sup>2</sup> pressure: 1 - 6 bar
- ✓ N<sup>2</sup> standby amount: 0 - 25 L/min

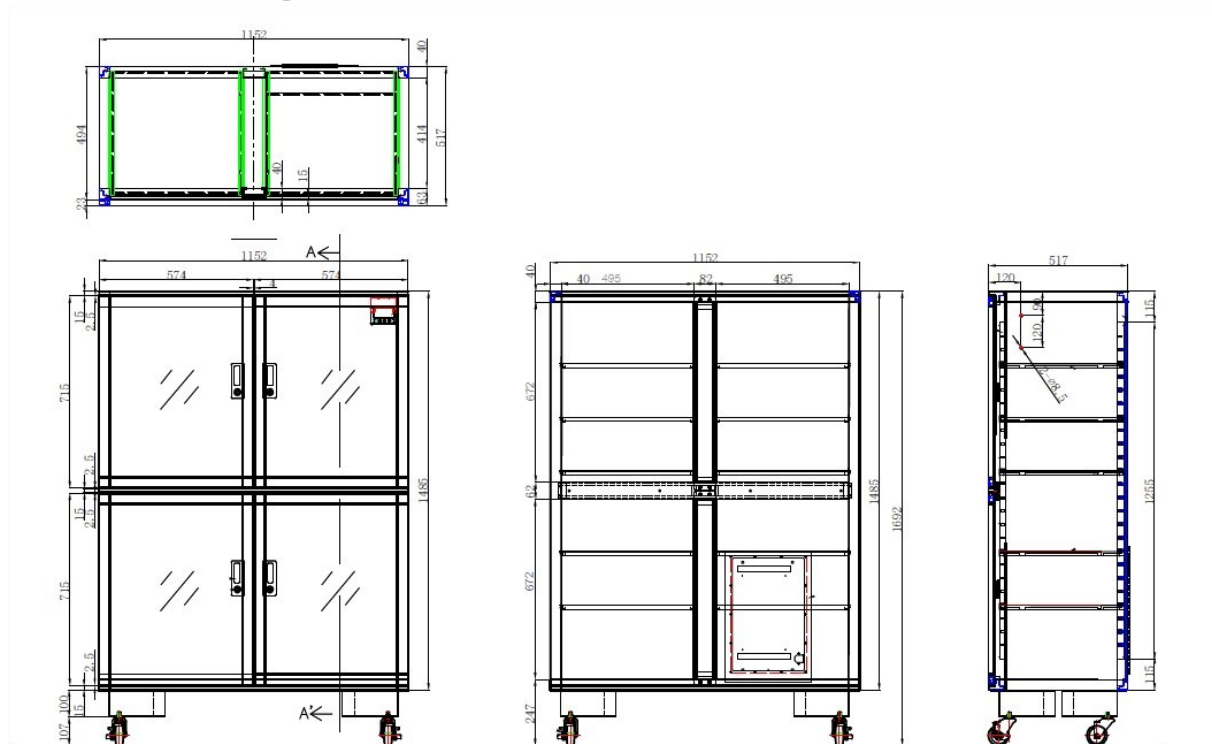
## Performance test



## Test conditions

- |                                 |  |
|---------------------------------|--|
| ✓ Instrument:                   | Vaisala  |
| ✓ Type of dew point sensor:     | Vaisala drycap 180M                                |
| ✓ Accuracy of dew point sensor: | ± 0,2° C at + 20° C (+ 68° F)                      |
| ✓ Location of sensor:           | In the direct surroundings of the cabinet sensor   |
| ✓ Ambient conditions:           | Hum. 50 ± 5% rH, 22°C ± 2°C, Pressure 994 ± 20 hPa |
| ✓ Door openings:                | 2 door openings, 15 sec. (average RH 0,70%)        |

## Technical drawings



Dimensions mentioned in mm.

Maximum number of shelves with drying unit installed: 37 pcs long, 7 pcs short shelves.

Maximum number of shelves without drying unit installed: 44 pcs long shelves.

Minimum space between the shelves: 35 mm.

## ESDA 804-00

### Options



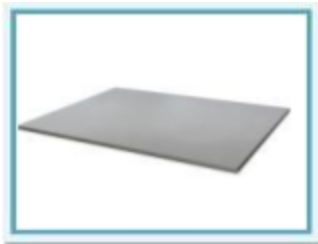
**SMD Reel rack with reel supports**  
460 mm length.

*Item number 20014000*



**Reel support**  
Additional reel supports for 20014000.

*Item number 20014200*



**Shelf standard incl. brackets**  
For cabinets type ESDA 804

Standard:  
*Item number 20100021*  
Short, when drying unit is mounted:  
*Item number 30010100*



**N<sup>2</sup> Flow system**  
The N<sup>2</sup> Flow system is developed to use in combination with a Totech drying cabinet. The device is used for the quick removal of moisture in the cabinet. The drying process is realized by using nitrogen. Adjustable 10 - 100 L/min.

*Item number 20010020*



**Trolley**  
For easy transportation of the cabinet, 1 meter high

Only on request

## ESDA 804-00

### Options



#### Dry unit U-4001

Item number 230V/50Hz 30021129  
Item number 120V/60Hz 30021131



#### SuperDry Data Logger

Highly accurate data logger with standard Ethernet interface.  
Compatible with the Free Totech Viewer and Totech Monitor.

Item number 47000582



#### Humidity calibrator Hygropalm 22

Precision measuring device for calibrating sensors.

Set including Hygroclip sensor, case and cable:  
Item number 20001019  
Hygropalm only:  
Item number 20001016



#### N<sup>2</sup> Autoflow system

The autoflow system is developed to use in combination with a Totech drying cabinet. The device is used for the quick removal of moisture in the cabinet after the doors have been opened. The drying process is realised by using Nitrogen (N<sup>2</sup>), which is purged automatically after the doors are closed. (timer controlled)

Item number 22613001